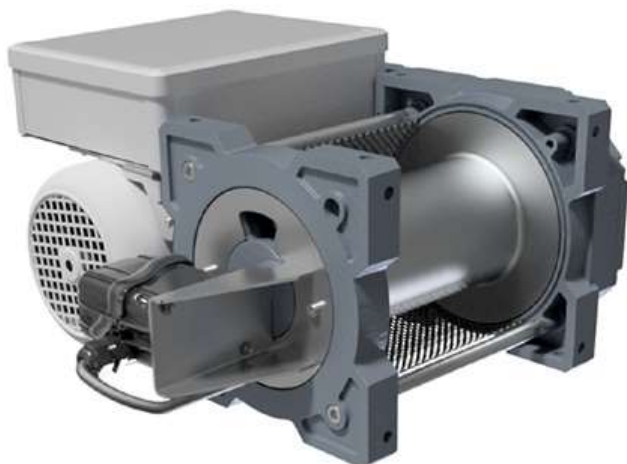


COMPACT ELECTRIC WINCHES

TRBOXTER INOX



- ▶ Capacities from 250 to 990 kg.
Multifunctional compact electric winches designed for simple lifting or pulling applications in corrosive environment. Ideal for harsh environments : offshore, marine, chemical, food industries....
- ▶ FEM 1Bm / 1Am - Moderate to accentuated use, depending on the model.
- ▶ Aluminum housing with C4 marine paint and 316L stainless steel drum.
- ▶ Greased reducer with helical gears.
- ▶ Asynchronous motor. Class F. IP 66 protection.
- ▶ Automatic lack of current brake.
- ▶ Single phase power 230V-50Hz or three phase 400V-50Hz (other tension on request) depending on model.
- ▶ Very low voltage control (BT) ensuring user protection against electrical risks.
- ▶ IP 66 control box.
- ▶ 3 buttons pendant control (Up - Down- Emergency Stop), not removable (3 m long control cable). IP 66 protection.

- Options**
- ▶ Wire rope (m/l or kit) and hook (see p. 94-98).
 - ▶ Limit switch (IP66).
 - ▶ Electronic load limiter.
 - ▶ Rope press roller.
 - ▶ Rope slack switch.
 - ▶ Grooved drum.
 - ▶ Other options, see p. 66-72.

Strong points



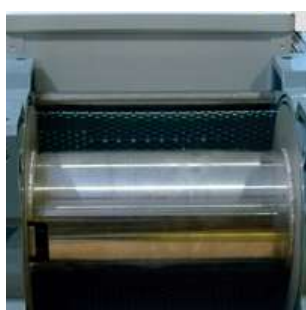
- ▶ IP 66 Pendant control. Marine type electric cable (without halogen). Harting type plug, IP66 protection.



- ▶ IP 66 control box included.



- ▶ Highly reliable cable clamp not requiring special tool with rope winding direction guide. Nut cage for easy attachment.



- ▶ Drum protected by an orientable perforated metal sheet. Wide flanges for large cable capacity.

Applications



- ▶ Marine industry.



- ▶ Food industry.



- ▶ Offshore industry.

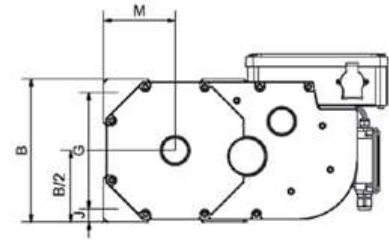
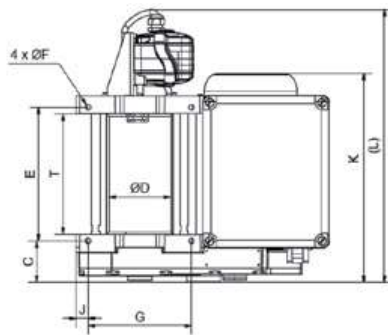
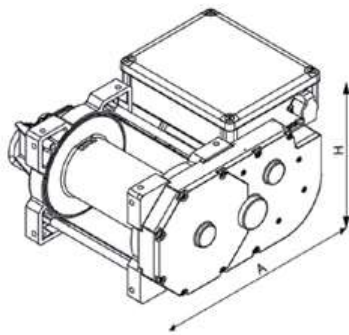


- ▶ Chemical industry...





Dimensions



| Models | TRBOXTER INOX 250 | | TRBOXTER INOX 500 | | TRBOXTER INOX 750 | | TRBOXTER INOX 990 | |
|---------------|-------------------|-------|-------------------|-------|-------------------|------|-------------------|------|
| | Standard | Long | Standard | Long | Standard | Long | Standard | Long |
| A mm* | 483 | 483 | 483 | 483 | 549 | 549 | 549 | 549 |
| Ø D mm | 118 | 118 | 118 | 118 | 150 | 150 | 150 | 150 |
| E mm | 255 | 370 | 255 | 370 | 318 | 463 | 318 | 463 |
| Ø F mm | 10.5 | 10.5 | 10.5 | 10.5 | 12.5 | 12.5 | 12.5 | 12.5 |
| G mm | 197 | 197 | 197 | 197 | 246 | 246 | 246 | 246 |
| H mm | 284.5 | 284.5 | 284.5 | 284.5 | 329 | 329 | 329 | 329 |
| K mm* | 398.5 | 513.5 | 398.5 | 513.5 | 456 | 601 | 456 | 601 |
| L mm** | 525 | 640 | 525 | 640 | 625 | 770 | 625 | 770 |
| T mm | 230 | 345 | 230 | 345 | 290 | 435 | 290 | 435 |

* The value can vary according to the motor terminal. ** with limit switch option.

Technical characteristics

| References | TRBOXTER INOX 251 BT 20 | TRBOXTER INOX 253 BT 20 | TRBOXTER INOX 501 BT 10 | TRBOXTER INOX 503 BT 10 | TRBOXTER INOX 751 BT 5 | TRBOXTER INOX 753 BT 5 | TRBOXTER INOX 991 BT 5 | TRBOXTER INOX 993 BT 5 |
|-------------------------------|-------------------------|-------------------------|-------------------------|-------------------------|------------------------|------------------------|------------------------|------------------------|
| Capacity top layer kg | 250 | 250 | 500 | 500 | 750 | 750 | 990 | 990 |
| Capacity 1st layer kg | 300 | 300 | 500 | 500 | 900 | 900 | 990 | 990 |
| Nb of layers | 3 | 3 | 3 | 3 | 3 | 3 | 3 | 3 |
| Maxi. Drum capacity m | 54 | 54 | 40 | 40 | 53 | 53 | 48 | 48 |
| 1st layer drum capacity m | 15 | 15 | 11 | 11 | 15 | 15 | 13 | 13 |
| Wire rope Ø mm | 5 | 5 | 7 | 7 | 9 | 9 | 10 | 10 |
| Speed m/min | 22 | 22 | 12 | 12 | 6.5 | 6.5 | 5 | 5 |
| FEM | 1Am | 1Am | 1Bm | 1Bm | 1Am | 1Am | 1Bm | 1Bm |
| Motor kW | 1.1 | 1.1 | 1.1 | 1.1 | 1.1 | 1.1 | 1.1 | 1.1 |
| Power | 1 Ph 230V | 3 Ph 400V | 1 Ph 230V | 3 Ph 400V | 1 Ph 230V | 3 Ph 400V | 1 Ph 230V | 3 Ph 400V |
| Weight (without wire rope) kg | 55 | 55 | 55 | 55 | 95 | 95 | 95 | 95 |

The wire rope diameter corresponds to the capacity on the top layer with a safety coefficient of (about) 5 when lifting with non-rotating wire rope.
Long drums models: drum length and wire rope capacity x 1,5.



See the following pages :

High lifting range p. 54